

Are you learning online? Project Lead The Way (PLTW) can help you with useful tips in your course to help you navigate as you learn! Contact your teacher if you have any questions. Here are more strategies to empower and support you in your online and blended (a mix of online and in-school) learning experiences.

PLTW's Distance Learning Support

PLTW offers students a transformative learning experience. The backbone of the PLTW experience is the APB approach, which stands for Activity-, Project-, and Problem-based learning.



Your Role as a Student

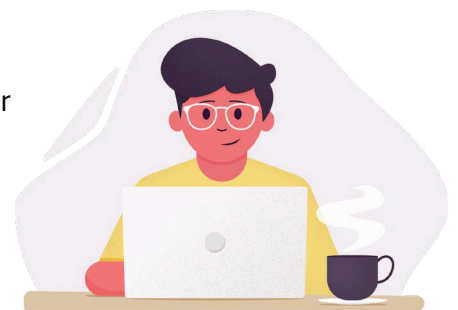
You can always contact someone you trust for support. There are also many steps you can take to help yourself, including but not limited to the following:

Where You Learn

- Set up a physical learning space that meets your needs and minimizes distractions.
- Set up an online learning space (organizing and managing files) that meets your needs.

How You Learn

- Ask your teacher and school for help on how to learn online.
- Take ownership of your learning, and ask for help when you need it.
- Create a calendar to help track your learning progress, manage your time, and keep yourself on track and accountable.
- Set up learning goals for yourself.
- Monitor your learning progress.



Create a Healthy Environment

- Take care of yourself and your wellbeing.
- Set a routine.
- Make sure to take breaks.
- Rest your eyes occasionally by focusing on something other than your digital device.
- Exercise regularly.
- Eat healthy food.
- Drink lots of water.



Who Can Help

- Take care of yourself and your wellbeing.
- Contact trusted individuals when you need help.
- Work with your caregiver, teachers, and/or other educators for support for your learning habits.
- Ensure you have the technology and connectivity you need to learn at home. If you need assistance with technology or connectivity, contact your teacher.
- Note where technology support is available and who can help you resolve technical issues.
- Ask for help with computer skills needed to complete and submit assignments.
- Make sure to be respectful when communicating with others in your learning environment.
- Describe to your teacher(s) any problems with learning materials.

Project Lead The Way (PLTW) would like to thank the following individuals and organizations for their contributions to the development of this guide:

- Dr. Kathryn Kennedy, an education consultant specializing in online, blended, and digital learning. The foundation of the guide is based on work done by Michigan Virtual™, through its Michigan Virtual Learning Research Institute®, where Dr. Kennedy served as Director from 2013 - 2018.
- PLTW partners Amazon Web Services, ArcelorMittal, Chevron, Toyota, and Verizon for their generous support that has enabled PLTW to effectively serve its network of schools and districts in a distance learning environment.
- Last but not least, PLTW Team Members, who represent years of experience in the classroom and as administrators, and bring significant expertise in instructional design, activity-project-problem-based content development, student engagement, and teacher professional development.